

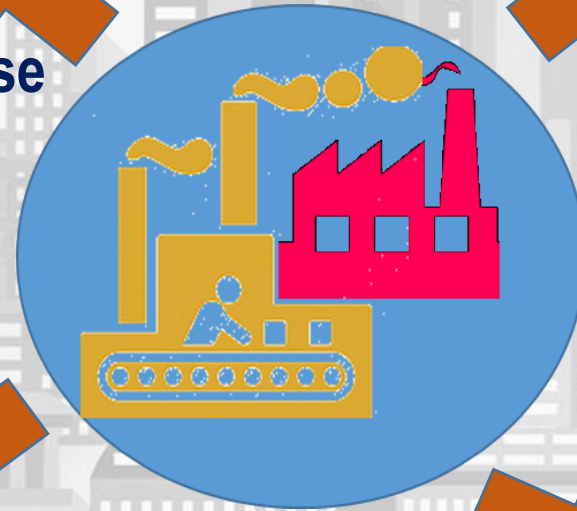
INDUSTRIAL'S TRANSACTION DATA Q1 2019 (Historical Demand)

Type Of Industry Units

- 30.3%** Terraced Factory/ Warehouse
- 23.5%** SD Factory/ Warehouse
- 12.1%** Detach Factory/ Warehouse
- 1.6%** Complex/ Units
- 32.4%** Others

Price Range (RM)

- 1. 27.9%** Below RM300K
- 2. 13.4%** RM300K – RM500K
- 3. 17.7%** RM500K – RM1 Million
- 4. 41.0%** Above RM1 Million



Transaction Data Q1 2019

(Primary + secondary Market)

1,854 Units

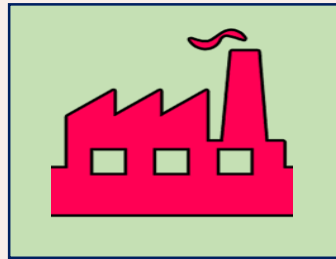
Contribution By State

- 1. Selangor: 671 units**
- 2. Johor: 282 units**
- 3. Negeri Sembilan: 159 units**
- 4. Sarawak: 152 units**
- 5. Perak: 122 units**

Further information please refer to Property Sale Data Q1 2019

Industrial: Historical Demand vs Supply as at Q1 2019

Transaction Data (Demand) vs Stock Data (Supply) Q1 2019

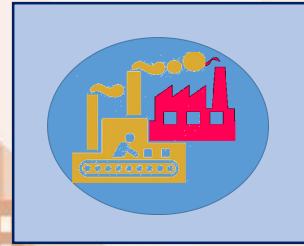


1,854 units

Transaction Data

(Demand: Primary & Secondary Data)

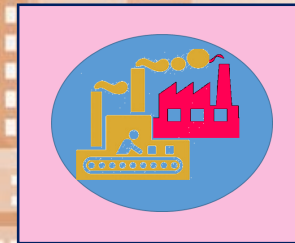
VS



11,590 units

Incoming & Planned Supply (Future Supply)

=16.0%



115,993 units

Industrial Existing Stock (Existing Supply)

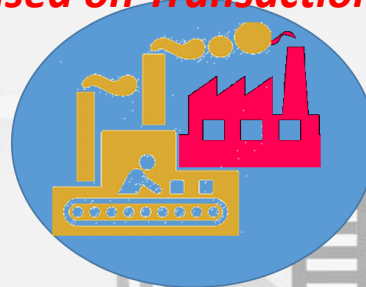
=1.6%

Further information please refer to Property Sale Table & Property Stock Table Q1 2019

Industry: Demand & Future Supply By Type Q1 2019

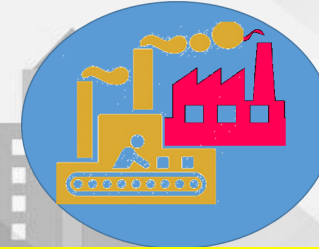
HISTORICAL DEMAND

(Based on Transaction Data)

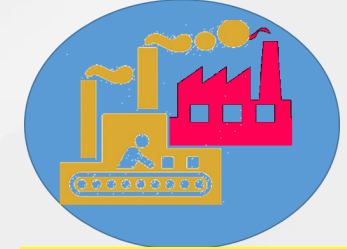


(Primary & Secondary Market)

FUTURE SUPPLY



INCOMING SUPPLY



PLANNED SUPPLY

Type of Property

Terraced Factory/ Warehouse

562 Units

1,670 Units

2,313 Units

SD Factory/ Warehouse

436 Units

1,520 Units

2,353 Units

Detach Factory/ Warehouse

225 Units

768 Units

2,162 Units

Flatted Factory

-

-

8 Units

Complex

30 Units

6 Units

17 Units

Others

601 Units

508 Units

265 Units

Total

1,854 Units

4,472 Units

7,118 Units

Further information please refer to Property Sales Data & Property Stock Table Q1 2019