

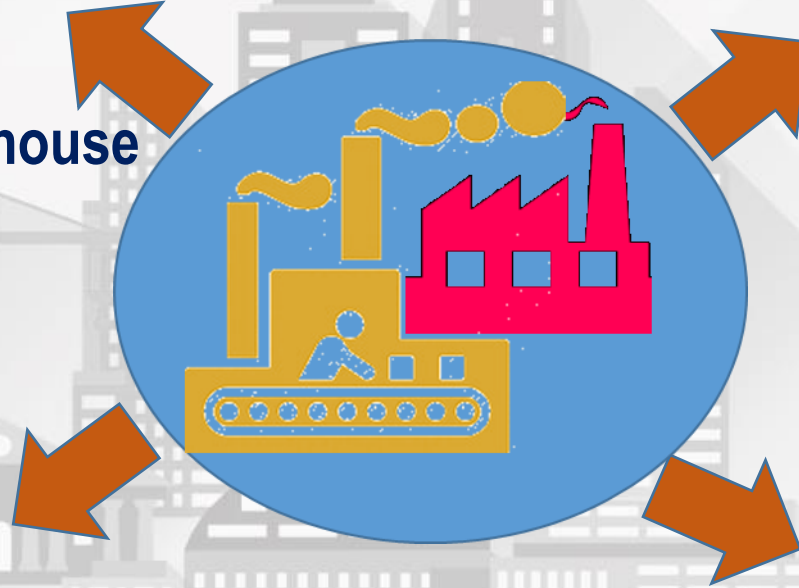
INDUSTRIAL'S TRANSACTION DATA 2018 (Historical Demand)

Type Of Industry Units

- 31.2% Terraced Factory/ Warehouse
- 22.7% SD Factory/ Warehouse
- 12.2% Detach Factory/ Warehouse
- 2.2% Complex/ Units
- 31.8% Others

Price Range (RM)

- 1. 24.4% Below RM300K
- 2. 12.8% RM300K – RM500K
- 3. 20.2% RM500K – RM1 Million
- 4. 42.5% Above RM1 Million



Transaction Data 2018

(Primary + secondary Market)

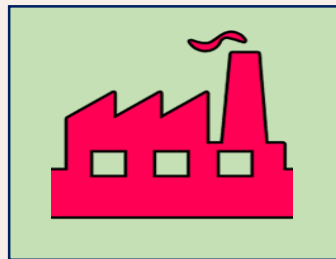
6,032 Units

Contribution By State

1. **Selangor:** 2,029 units
2. **Johor:** 866 units
3. **Perak:** 635 units
4. **Pulau Pinang:** 458 units
5. **Sarawak:** 385 units

Industrial: Historical Demand vs Supply as at Q4 2018

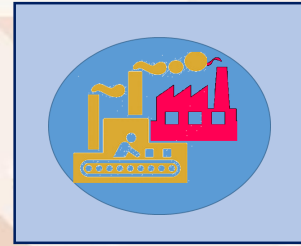
Transaction Data (Demand) vs Stock Data (Supply) 2018



6,032 units

Transaction Data

(Demand: Primary & Secondary Data)

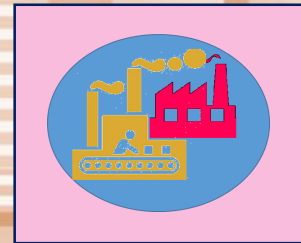


11,974 units

Incoming & Planned Supply (Future Supply)

=50.4%

VS



115,397 units

Industrial Existing Stock (Existing Supply)

=5.2%

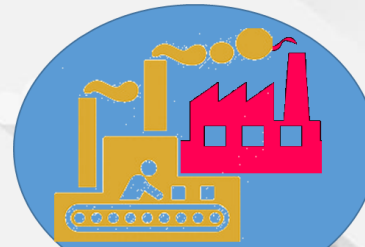
Further information please refer to Property Market Report & Property Stock Report/ Table 2018

Industry: Demand & Future Supply By Type 2018

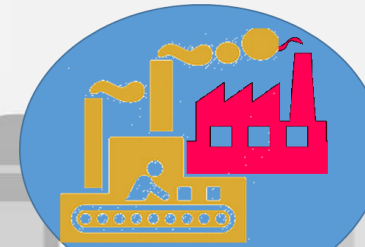
HISTORICAL DEMAND

(Based on Transaction Data)

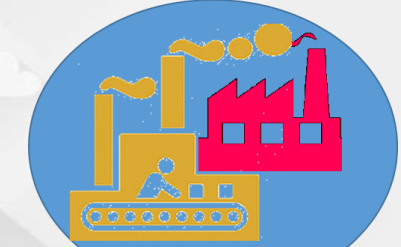
FUTURE SUPPLY



EXISTING STOCK



INCOMING SUPPLY



PLANNED SUPPLY

Type of Property

6,032 Units

(Primary & Secondary Market)

4,917 Units

7,057 Units

Type of Property	EXISTING STOCK	INCOMING SUPPLY	PLANNED SUPPLY
Terraced Factory/ Warehouse	1,879 Units	1,711 Units	2,399 Units
SD Factory/ Warehouse	1,368 Units	1,746 Units	2,355 Units
Detach Factory/ Warehouse	735 Units	818 Units	2,124 Units
Flatted Factory	-	-	8 Units
Complex	130 Units	6 Units	18 Units
Others	1,920 Units	636 Units	173 Units

Further information please refer to Property Market Report & Property Stock Report/ Table 2018